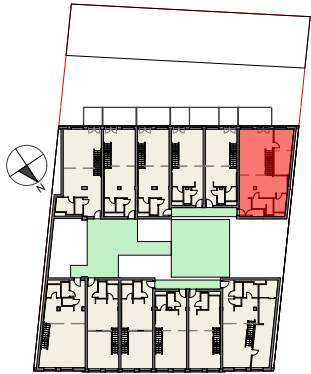


Vorentwurf Wohnbau Pitkagasse 4, 1210 Wien

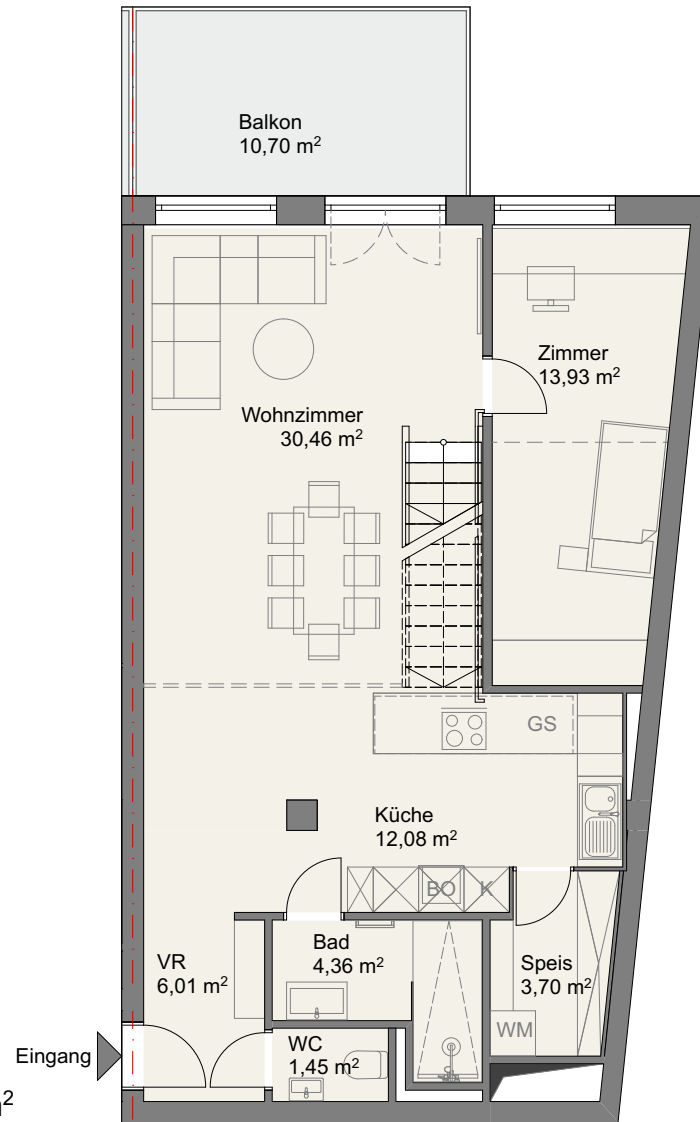


Lageplan
1. Obergeschoss

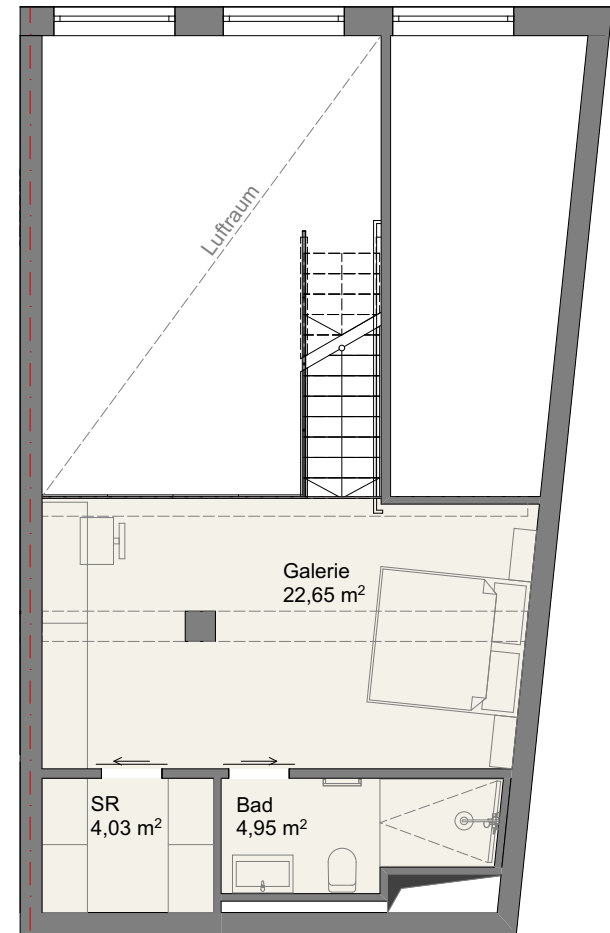
Top 17

Flächen

NGF: Wohnebene	ca.	71,90 m ²
NGF: Galerie	ca.	31,60 m ²
NGF Summe:	ca.	103,50 m²
Balkon:	ca.	10,70 m ²



1. Obergeschoss



2. Obergeschoss/Galerie