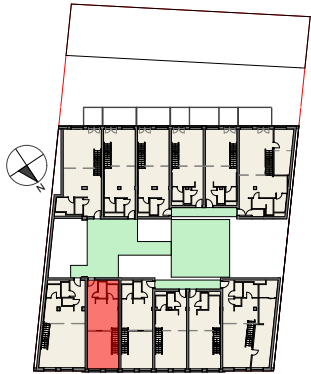


Vorentwurf Wohnbau Pitkagasse 4, 1210 Wien

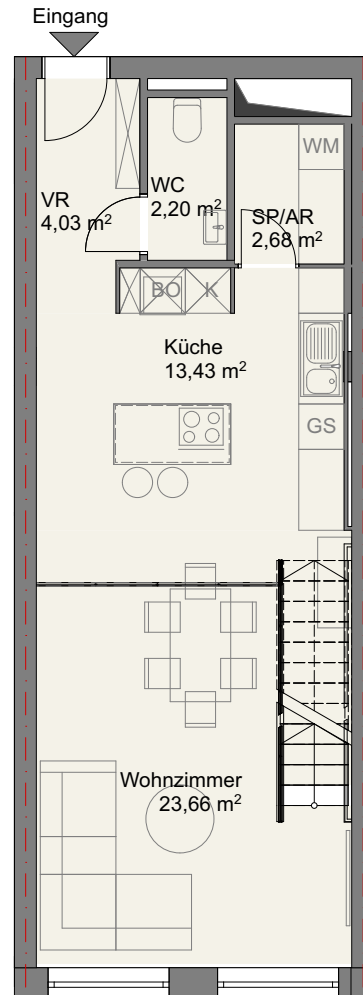


Lageplan
1.Obergeschoss

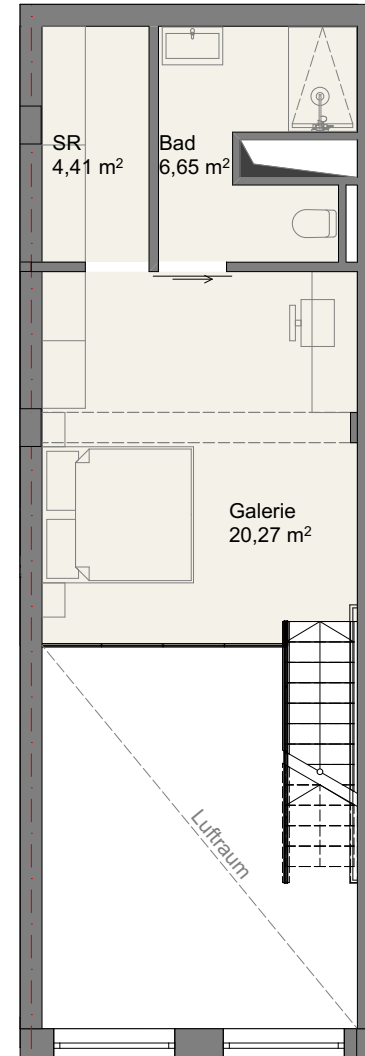
Top 19

Flächen

NGF: Wohnebene	ca. 46,00 m ²
NGF: Galerie	ca. 31,20 m ²
NGF Summe:	ca. 77,20 m²



1.Obergeschoss



2.Obergeschoss/Galerie