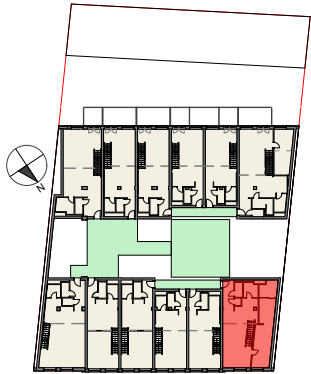


Vorentwurf Wohnbau Pitkagasse 4, 1210 Wien

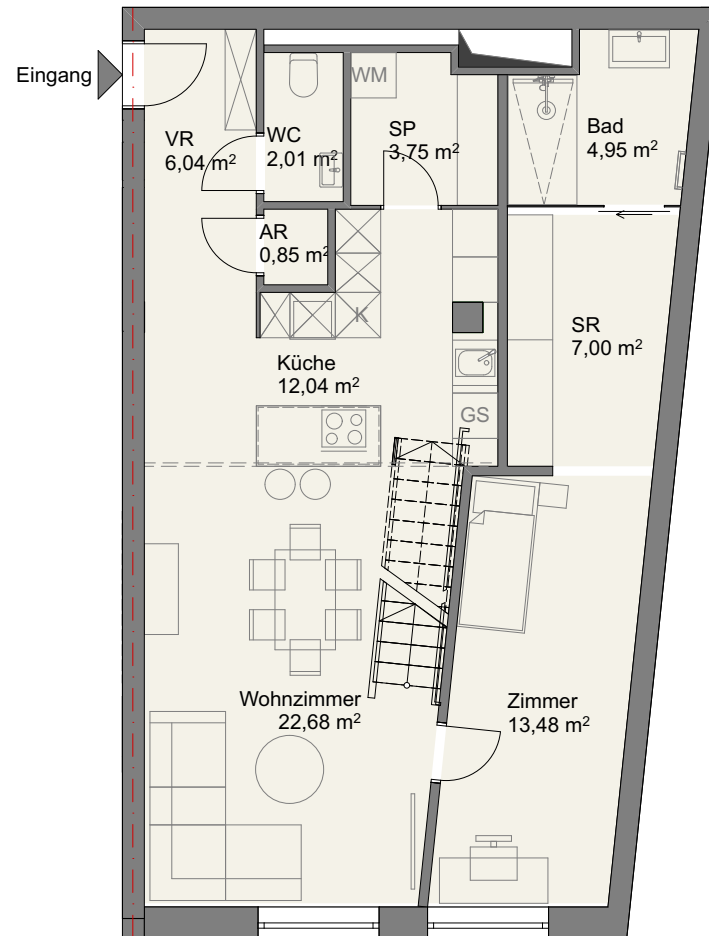


Lageplan
1. Obergeschoss

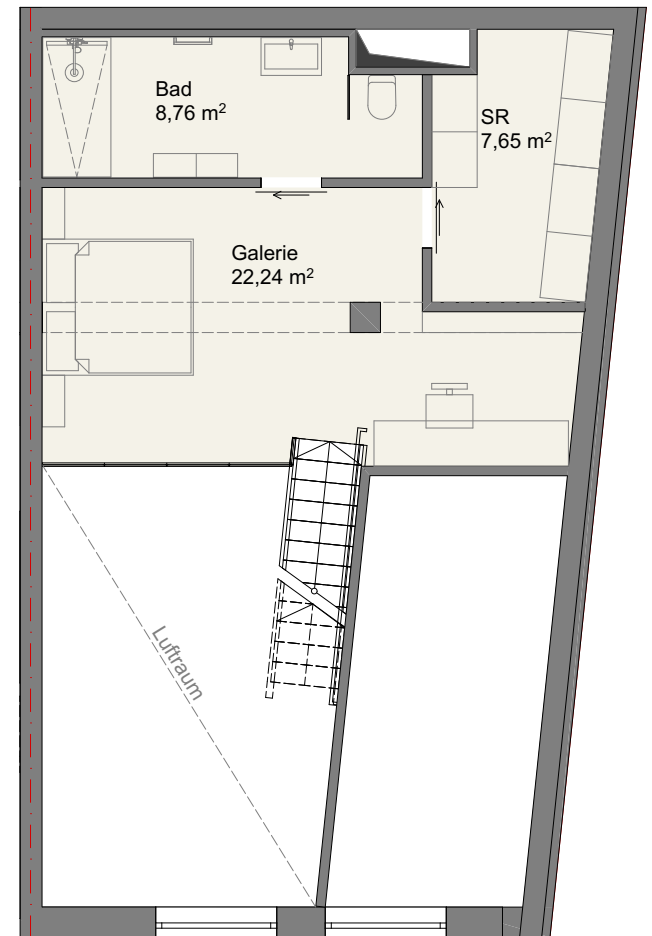
Top 23

Flächen

NGF: Wohnebene	ca.	72,50 m ²
NGF: Galerie	ca.	38,50 m ²
NGF Summe:	ca.	111,00 m²



1. Obergeschoss



2. Obergeschoss/Galerie