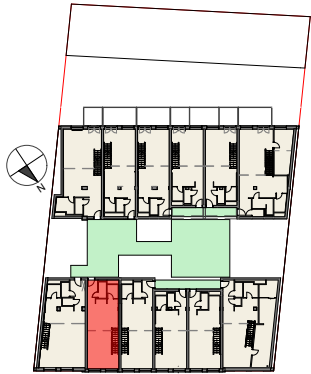


# Vorentwurf Wohnbau Pitkagasse 4, 1210 Wien

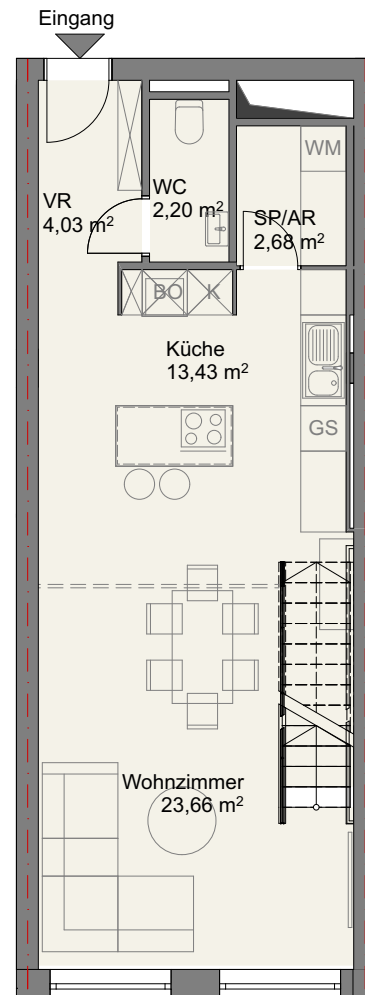


Lageplan  
3.Obergeschoss

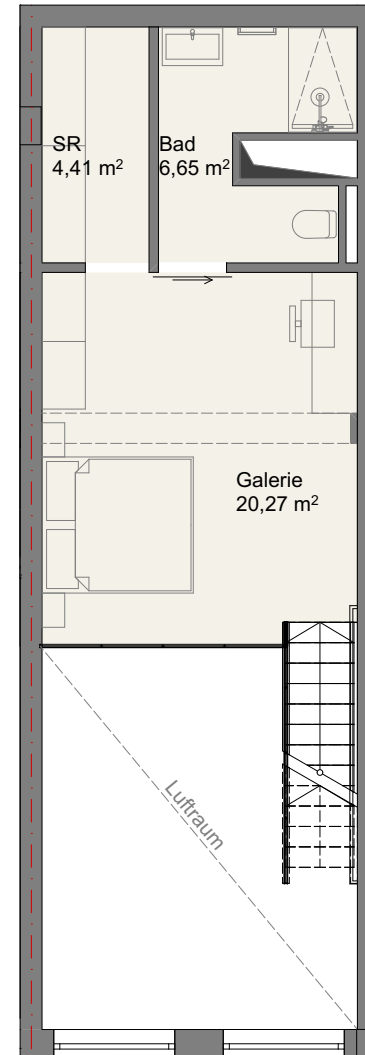
## Top 31

### Flächen

NGF: Wohnebene	ca. 46,00 m <sup>2</sup>
NGF: Galerie	ca. 31,20 m <sup>2</sup>
<b>NGF Summe:</b>	<b>ca. 77,20 m<sup>2</sup></b>



3.Obergeschoss



4.Obergeschoss/Galerie