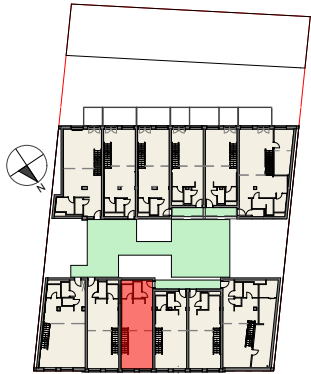


Vorentwurf Wohnbau Pitkagasse 4, 1210 Wien

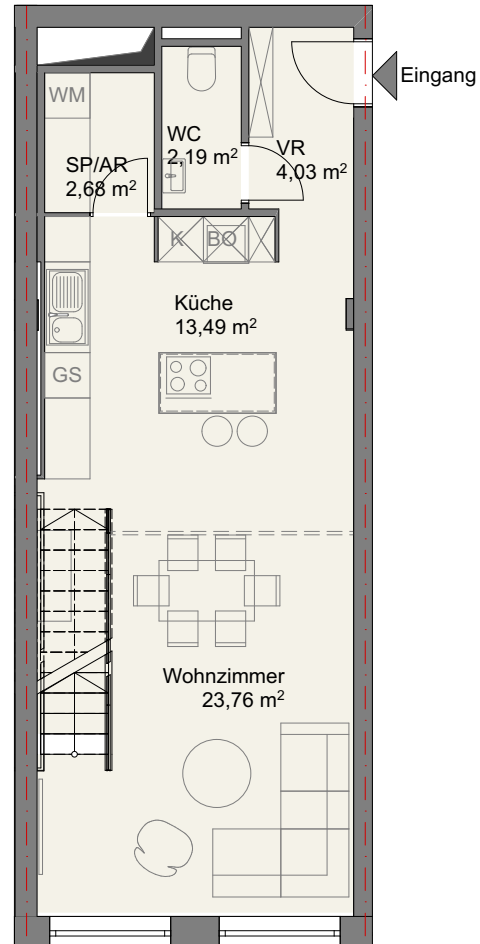


Lageplan
3. Obergeschoss

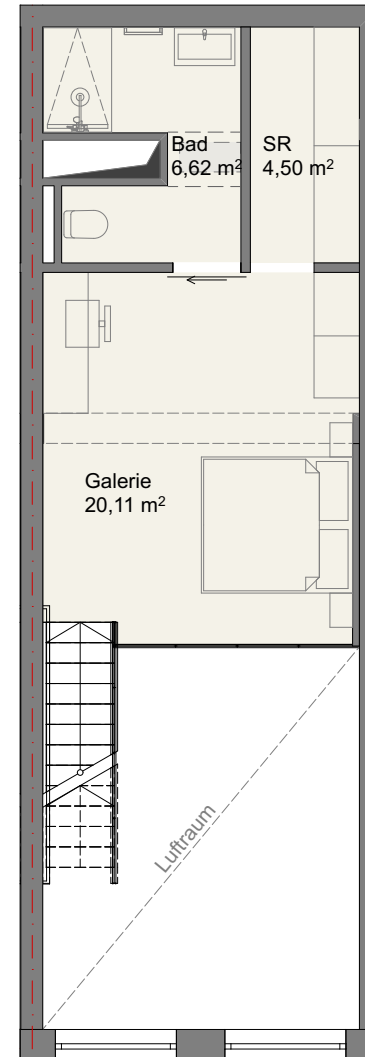
Top 32

Flächen

NGF: Wohnebene	ca. 46,00 m ²
NGF: Galerie	ca. 31,20 m ²
NGF Summe:	ca. 77,20 m²



3. Obergeschoss



4. Obergeschoss/Galerie