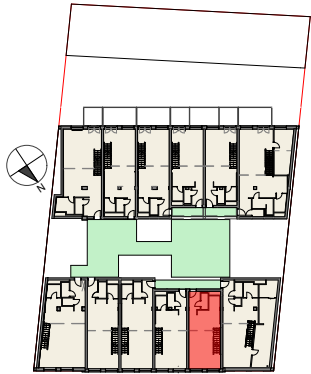


Vorentwurf Wohnbau Pitkagasse 4, 1210 Wien

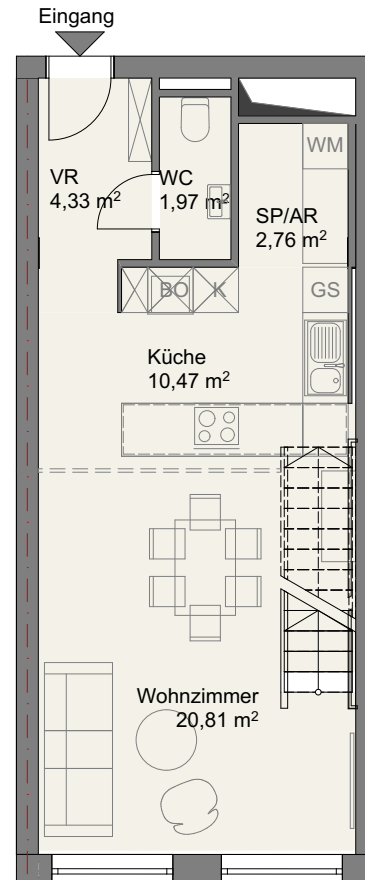


Lageplan
3.Obergeschoss

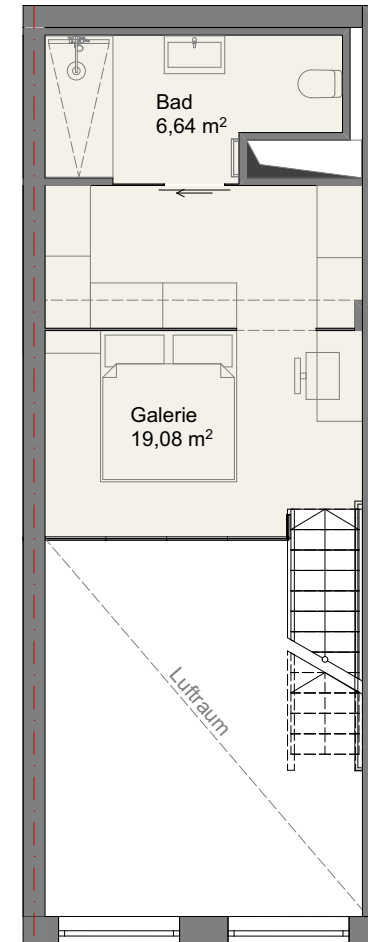
Top 34

Flächen

NGF: Wohnebene	ca. 40,00 m ²
NGF: Galerie	ca. 25,40 m ²
NGF Summe:	ca. 65,40 m²



3.Obergeschoss



4.Obergeschoss/Galerie