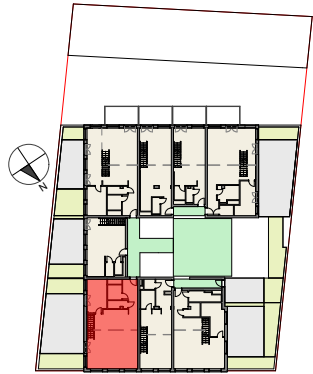
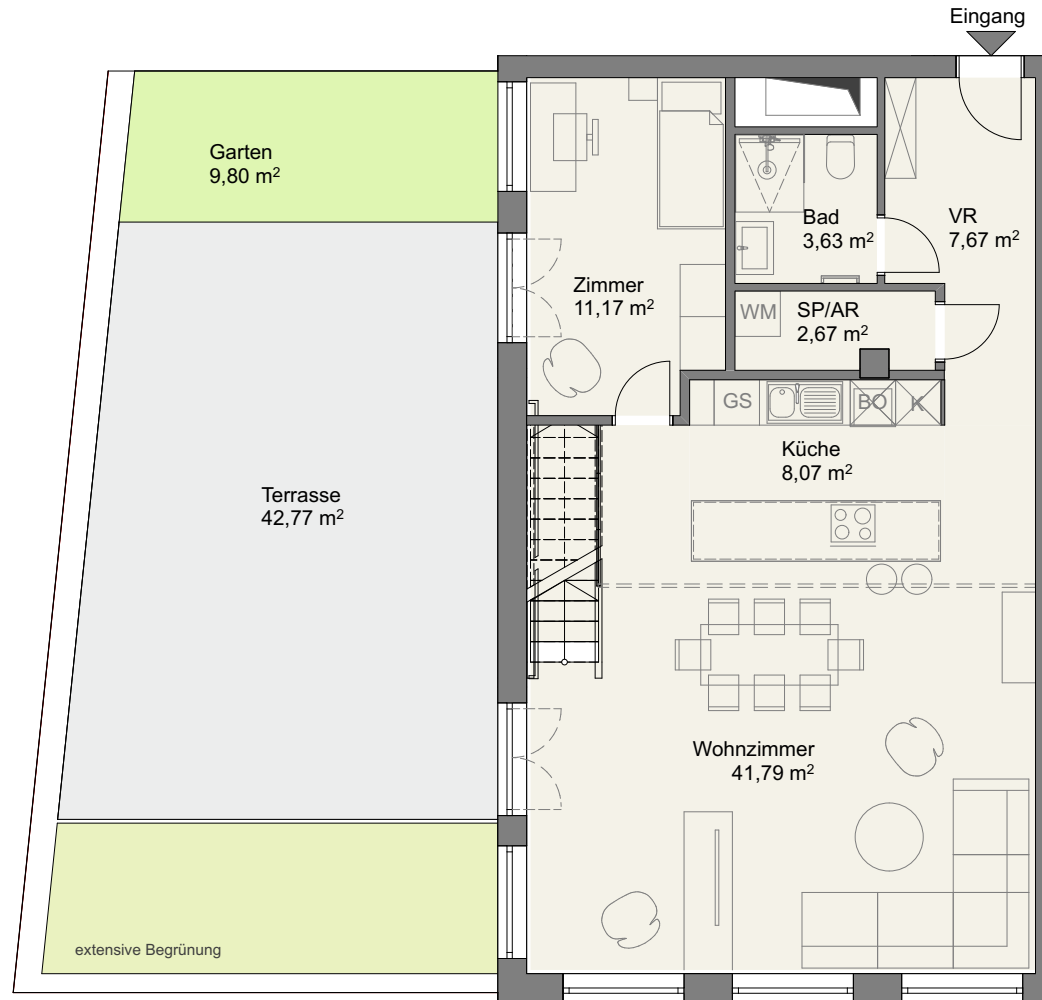


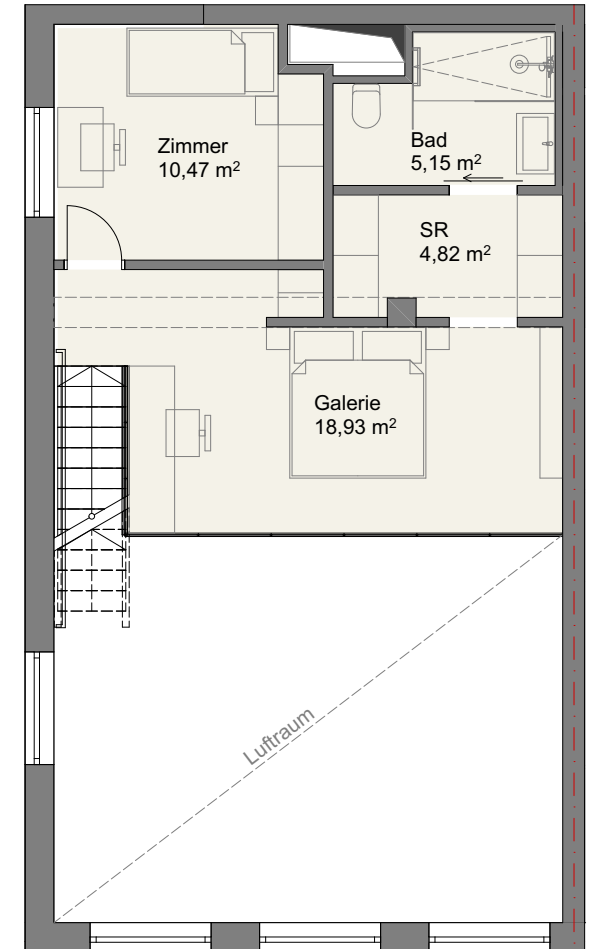
Vorentwurf Wohnbau Pitkagasse 4, 1210 Wien



Lageplan
5. Obergeschoss



5. Obergeschoss



6. Obergeschoss/Galerie

TOP 41

Flächen

NGF: Wohnebene	ca.	75,00 m ²
NGF: Galerie	ca.	39,30 m ²
NGF Summe:	ca.	114,30 m²

Terrasse:	ca.	42,70 m ²
Garten:	ca.	9,80 m ²